

# LES COMMANDOS PERCU / DEABRU BELTZAK

## DANBOR TALKA

*CLASH OF DRUMS - LE CHOC DES TAMBOURS*



---

## TECHNICAL RIDER

---

(Last update : March 2018)



## CONTACTS

**Stage and tour management :** Vincent Gonzalez / regie@commandospercu.com  
+336 51 52 17 41

**Fireworks :** Metty Benistant / pyro@commandospercu.com  
+335 61 35 00 77 / +336 68 98 77 01

**Light control :** Michel Pradillon / mpradillon@gmail.com  
+336 11 73 12 68

**Sound engineer :** Laurent Boulhabel / lo.bou31@yahoo.fr  
+33 (0)6 76 30 29 46

**Artist and stage director :** Raymond Gabriel / contact@commandospercu.com  
+335 61 35 00 77 / +336 81 05 56 51

## Preamble

This technical rider and any possible modifications are enclosed with the contract.

Each provider must be aware of the following technical conditions especially with regard to weather conditions.

We need the technical crew to welcome us on site : 1 local stage manager, 2 sound technicians, 2 light technicians including one for the follow spot.

# INDEX

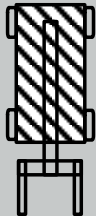
CONTACTS .....	2
PYROTECHNIC AND SCENIC DEVICES OVERVIEW.....	4
STAGE, SOUND, POWER.....	5
STAGE CONTROL PLATFORM .....	5
POWER SUPPLY .....	5
OVERVIEW / DIMENSIONS .....	6
FIREWORKS SAFETY AREA .....	7
CLAUSES CONCERNING PYROTECHNICS.....	7
SAFETY .....	7
TENT FOR THE SET UP .....	8
DRESSING ROOM .....	8
CATERING .....	8
TELEHANDLER .....	8
MATERIAL FOR FIREWORKS .....	8
PLANNING .....	9
BARRIERS .....	9
WEATHER.....	9
PUBLIC LIGHT .....	9
GUIDE FOR THE PARADE .....	9
CLEANING UP .....	9
LIGHT EQUIPEMENT LIST .....	10
LIGHT STAGE PLOT .....	11
SOUND EQUIPEMENT LIST .....	12
SOUND PATCH LIST .....	13
STAGE PLOT .....	14
DETAILS FOR SHOWS ON, OR IN FRONT, OF WATER .....	15
NOTE FOR THE TECHNICAL STAFF .....	16

# PYROTECHNIC AND SCENIC DEVICES OVERVIEW

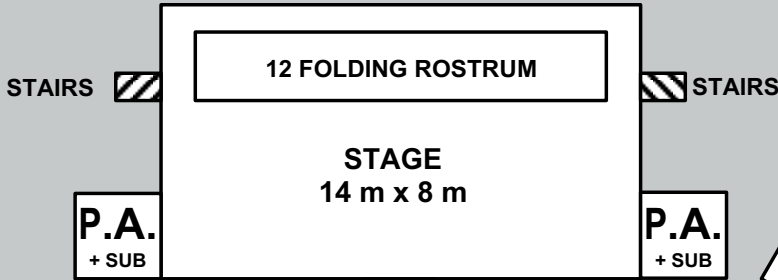
safety area made with crowd barriers

fireworks fallout area  
size adapted to the the project and the site

40 crowd barriers  
we use them to rig the fireworks  
+ 1 000 kg of sand



TELEHANDLER



SLOPE ACCESS



SET UP  
BIG MARQUEE

safety area made with crowd barriers

PUBLIC AREA

PUBLIC AREA

## STAGE, SOUND, POWER

- Size : 14 m X 8 m, without handrail or any roof. The height depend of the audience expected :
  - . less than 5 000 people, height = 1,40 m
  - . between 5 000 et 10 000 people, height = 1,70 m
  - . more than 10 000 people, height = 2,00 m
- 2 stairs at stage right and stage left , wide = 0,80 m, (see page 6).
- A front access slope without handrail : 2 m wide and 30% of slope (see page 6)  
(for a stage àf 1,40 m height, we need a slope acces of 5m length, for a stage 1,70 m heigh = 6 m length  
and for a stage 2 m heigh = 7,00 m lenght)
- A black-face masking for the front side of the stage with 50 cm on the sides.
- 12 folding rostrums 2 m x 1 m for the upstage, set up like this (see page 6), set up 0,80 m away from the back of the stage :
  - 2 folding rostrums, height = 1 meter at stage right
  - 2 folding rostrums, height = 1 meter at stage left
  - 8 folding rostrums, height = 0,40 meter at the center
- **We need to drive some small screws on the stage.** If it's not possible, please provide us 25 weights of 5kg each.
- A squeege (to remove the water) for the stage in case of rain.
- To respect the identity of the show, we don't allowed big advertise on the stage's frame.

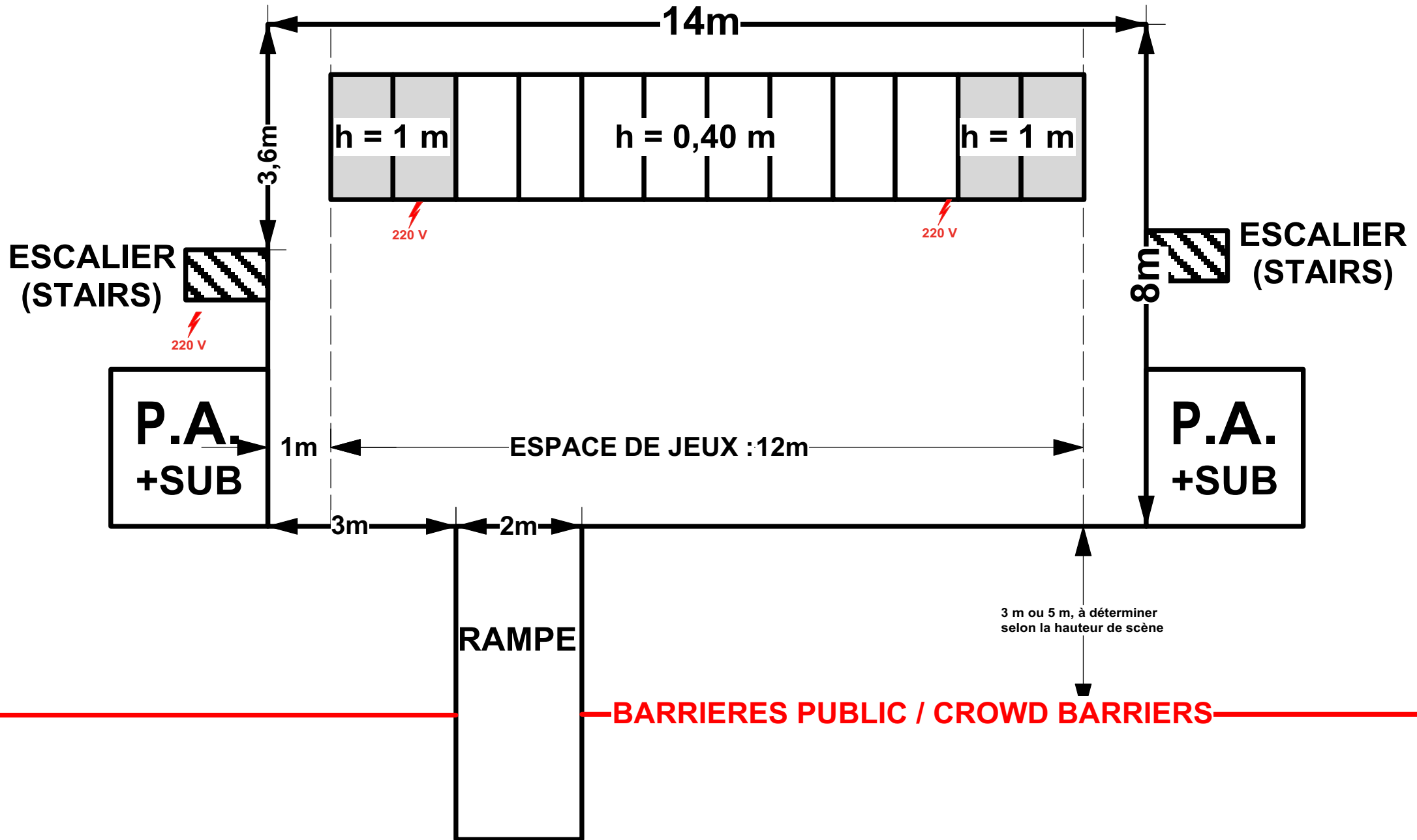
## STAGE CONTROL PLATFORM

- A platform 4 x 4 m, h = 0.4 m for sound and light control desks. It has to positioned 30 meters minimum away from the stage on its axis.
- A platform height 4 meters for the follow spot, just behind the control room.
- A tent 4,5 m x 3 m appropriate for the stage control, it may be easily disassembled.
- Protect the wires running between the control desk and the stage.

## POWER SUPPLY

- Power depend of the sound and light material (no provided by the company) so please ask to your sound and light provider to the power request.
- 3 power lines running under the stage (and not behind) with an electrical box providing 30 m/A on each output line :
  - 1 three-phase + neutral service for the light system at the right side of the stage.
  - 1 three-phase + neutral service for Citycolors and Scrollers / light control desk / smoke machines / Splitters / at the right side of the stage
  - 1 three-phase + neutralservice for the sound.
- The stage must be connected to the ground.
- We need 3 power plug 13A 220 V for 9 a.m. : 1 at stage left / 1 at stage right / 1 close to stairs at stage right.

# OVERVIEW / DIMENSIONS



## **FIREWORKS SAFETY AREA**

- It is located near the rear area of the stage. The fireworks safety area can vary from 50m at least (ask us for details)
- No material should be store behind the stage (fireworks area)
- The site must be available and closed to the audience from 9.00 a.m. on the day of the performance, do not close only with safety tape.

## **CLAUSES CONCERNING PYROTECHNICS**

- A shipping container (L x l x h in meters) 8 m x 2,44 m x 2,6 m can be asked for storage.  
It has to be on the site one day before the show at 9 am. Do not provide it for show in Belgium.
- As “foreign” pyrotechnicians, we need to be assisted and supervised by a local pyrotechnician appointed by the organiser. (Please note that we have our own contacts in the UK and the Netherlands : for details ask us).
- The local pyrotechnician tasks will be :
  1. To analyze our needs concerning pyrotechnics. To work with the organiser to define what can be done according to the site and the specific country legislation.
  2. To help us find the products we require, according to our descriptions. (for some performances, we would like to import fireworks from France)
  3. To order these products, to deliver them on the site and to help with their rigging on site. Our pyrotechnicians will also take part to the rigging. We will fire the fireworks with our own firing system.
  4. To assume, as a local pyrotechnician, the responsibility for fireworks shooting.
  5. The local pyrotechnician fee is paid by the festival’s organiser. This payment includes fireworks and salary.
  6. In order to have an effective collaboration and to be supplied with good products and excellent advice, we would like to work with a recognised pyrotechnician

## **SAFETY**

- Security guards must be present before, during and after the show. It’s very important that the fireworks area still guarded until 3 hours after the show and overnight if we play few days on the same place.
- The number of security guard must be determined according with our stage manager.
- It is crucial that members of the public are prevented from getting into the pyrotechnic zone at all times.

## **TENT FOR THE SET UP**

- A large “Marquee” tent (min. 25 square meters) located on the site before the team arrives. It has to be equipped with 16 A 220V electrical outlets. 5 tables and 8 chairs are also required
- Located near to the stage, on one side (nothing behind the stage).
- This tent can be removed some hours before the show (ask us for more details).
- Thank you for provide us water, coffe and tea in this tent too.

## **DRESSING ROOM**

- Located near the stage or close from the departure of the parade with 5 tables and 14 chairs, light, mirrors, 12 towels + 12 washcloths and toilets. We need toilets, hot water and showers. Thank you to provide a heater in case of cold weather.

## **CATERING**

- Thank you for providing us water, tea and coffee during all the day for 14 people near to the stage.
- We also need 14 snacks for after the strike (or before the show if this one take place before 8:30 p.m., but they don't replace the dinner.

## **TELEHANDLER**

- Telehandler with fork at 7 meters high.
- Delivered at 9 am on the morning of the show. We will use it all day long, nobody else wouldn't be able to use it from 9 am to 2 hour after the end of the show.
- The forklift will be used to lift up a firework element, around 80 kg in weight. This element will be positioned up at the rear of the stage and required to reach a height of 10 metres.

## **MATERIAL FOR FIREWORKS**

- 1 000 kg of clean sand (building sand), a wheelbarrow and 2 shovels.
- 4 H2O fire-extinguishers for the fireworks safety area, and 3 CO2 fire-extinguishers (2 behind the PA, 1 next to the F.O.H.).
- 40 crowd barriers, available 20m behind the stage. These barriers will be used to rig and stabilize fireworks.  
**Note** : these 40 barriers come in addition to those intended to enclose the wole fireworks safety area.



## **PLANNING**

- We need to have the containair, the tent for set up, the tables and chairs ready for 9:00am the day before the show because we prepare the fireworks. The safety area also must closed the day before the show with security guard all the day and overnight. Do not do this in Belgium.
- We start the setting at 9:00 a.m., the stage must be set up before our arrival.
- We do the soundcheck at 3:30 p.m. . If it's not possible, tell us beforehand and reserve a time lap of 120 min.
- We prefer the sound and light provider to arrive 1 hour ahead of us. The stage and the power need to be ready before his arrival.

## **BARRIERS**

- The pyrotechnic zone must be fitted with crowd control barriers according to security guidelines, it's not allowed to close only with safety tape.
- It is imperative for the site to be safety closed to keep people from getting into the fireworks area from the morning of the show (9 am) to 3 hours after the show minimum.
- After the performance, the crowd barriers located in the pyrotechnic zone should not be removed until notified by us.
- The crowd barrier must be install 3 meters away from the front of the stage or 5 meter for stage higher than 1,60m.

## **WEATHER**

- All our fireworks materials and effects are waterproof. It's mandatory that we should be able to perform even in the weather was bad, provided of course that there is and audience and that the weather conditions do not become dangerous.
- All technical suppliers shall make the necessary arrangements for their equipments to be adequetely protected in case of bad weather.

## **PUBLIC LIGHT**

- Please make all arrangements with local technical services for the street lighting to be turned off during the show.
- It's imperative that a person in chage will come and meet our lighting manager and our stage manager on the afternoon before the show at the latest.

## **GUIDE FOR THE PARADE**

- Guide : we need 1 person during all the parade to lead us, and 2 other people to open the way, this is very important. We ask to meet them before the show (in the afternoon). They have to know the way of the parade

## **CLEANING UP**

- The organiser will be in charge of cleaning up the safety area and the stage after the show.
- Four 700 liters containers or equivalent will be needed to clean up the fireworks safety area, if we play many shows on the same place, please organize the rubbish collection after each show.

## LIGHT EQUIPEMENT LIST

### Reminder : no truss above the stage and no silver spot

- 2 booms light ST 25 h = 5.5 m minimum
- 2 aluminium truss 2,5 m
- 4 boom stand heigh 3,80m with side arm
- 3 winch stand, height adujstable between 1,20m and 3,80m, with side arm
- 2 smoke machines JEM ZR 44 + 2 fans AF1 (no hazer machine)
- 4 citycolor 2500 W or PR Century 2500W (No Kolorado)
- 16 PAR 64 **solo** : 14 MFL and 2 NSP
- 2 FL 1 300 W
- 8 Blinders 2600W (4 lamps)
- 16 OXO Multibeam LED FCW WP 18 x 5 W, protocol : DRGBW + Strobe
- 2 strobes MARTIN ATOMIC 3 000
- 8 stands floor
- Light Control GRAND MA 2 LIGHT (last update for the software)
- 1 follow spot HMI Juliat Aramis 2500W
- Dimmer : 24 x 3kW
- 2 splitters : 1 at stage left and 1 at stage right

**!!! All spot must be black !!!**

- Power packs will have to be shel- tered under the stage.
- **Plan two 1kW horizioids on a light stand, plugged in direct line for the firework's strike.**
- The sound control place must be made up in order to facilitate the communication between sound and light managers.
- The light plot will have to be set up and ready to run at 3 p.m.
- **Thank you to bring a ladder to do the focus.**

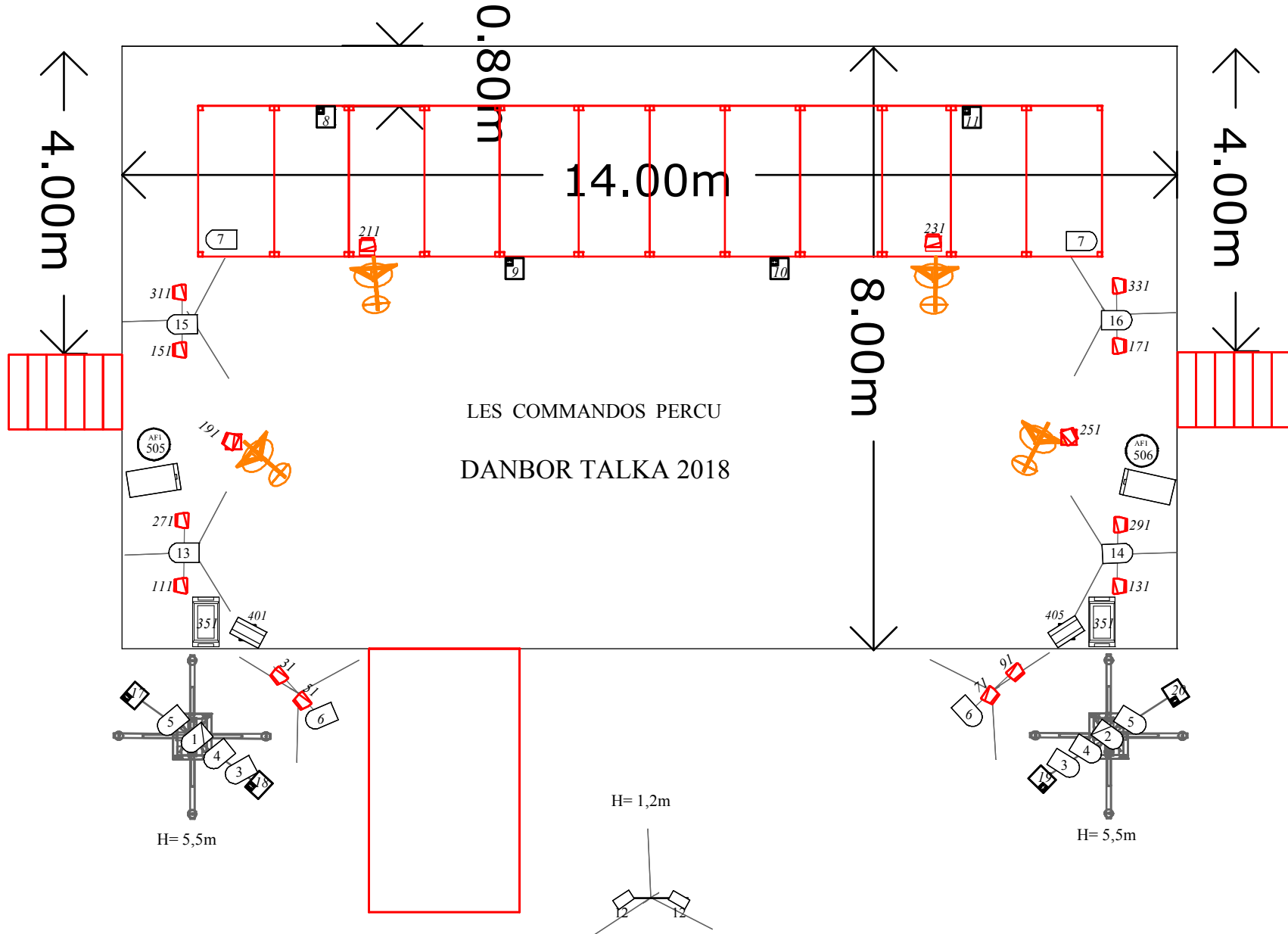
*All our pyrotechnic devices and effects are waterproof. It is mandatory that we should be able to perform even if the weather was bad, provid- ed of course that there is an audience and that the weather conditions do not become dangerous.*

*All technical suppliers shall make the necessary arrangements for their equipement to be adequately protected in case of bad weather.*

**CONTACT**  
 Design Light : Michel Pradillon  
 mpradillon@hotmail.com  
 Tel : +336.11.73.12.68.

**LEGEND**

2 CP 61	14 CP 62	8 BLINDER 2600W	4 CITYCOLOR	8 PLATINES SOL	16 PARS 64 LED OXO MULTIBEAM LED FCW WP	2 ATOMIC 3000	2 JEM ZR 44
16 PARS 64 OUTDOOR NOIRS							+ 2 AIR FORCE 1 PAS DE MACHINE A BROUILLARD
		2 FL 1300W					



## SOUND EQUIPEMENT LIST

### Sound system :

- clusted Line Array such as Heil, D&B, Adamson adapted to the audience expected.
- Sub bass, set up at the both side of the stage (no stack in front of the stage)

### FOH :

- Sound mixing console such as Yamaha CL5, Midas Pro 6 ou Pro 2 Soundcraft Vi4, Vi6, please contact our sound manager to confirm the choice of the sound desk :  
Laurent : lo.bou31@yahoo.fr and 00336 76 30 29 46
- A 3 post intercom (closed headphone L/R) : stage right, light desk, follow spot

*We arrive with the backup of the show on USB key, the backup is an «all» so the others backup will be deleted.  
Monitor mix is made with the FOH sound desk.*

### Monitor system :

- 4 sides (included Sub Woofer) on 4 different lines, such as D&B (2xQsub + 2xQ7 per side). The side system has to be placed on the side front stage.

### Microphones :

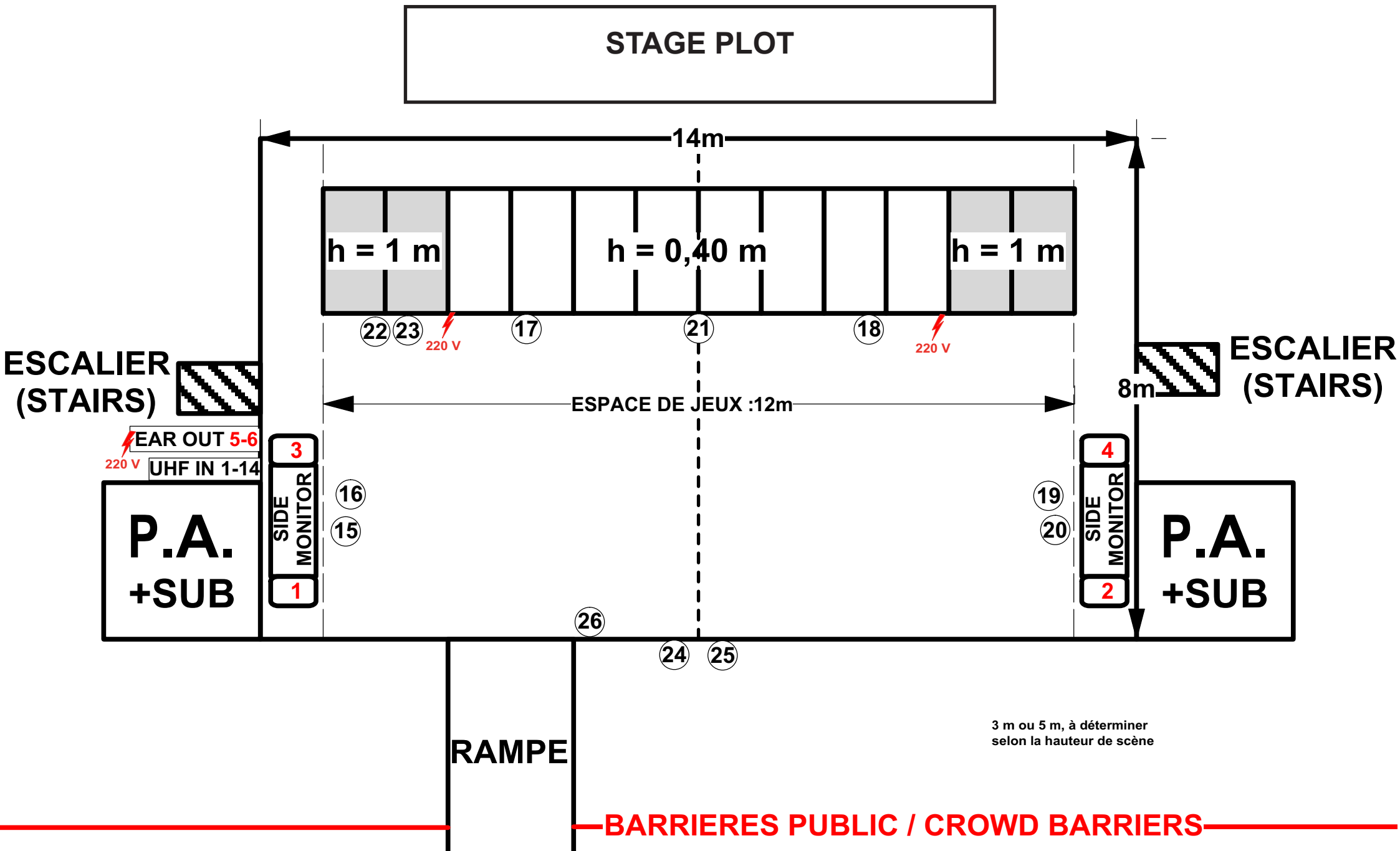
- 4 x Shure sm57
- 2 x Sennheiser E604 ou E604 (avec pince Mzh604)
- 3 x statiques type Neumann KM184
- 2 x sm58 filaire avec interrupteur
- 4 x Radial J48 ou/ or JDI
- 1 mike stand with branch for table
- 6 mike stands with branch
- 2 small mike stads with branch
- 1 side branch for mike

**Plan to have windscreens for all the microphones**

*All our pyrotechnic devices and effects are waterproof. It is mandatory that we should be able to perform even if the weather was bad, provided of course that there is an audience and that the weather conditions do not become dangerous.*

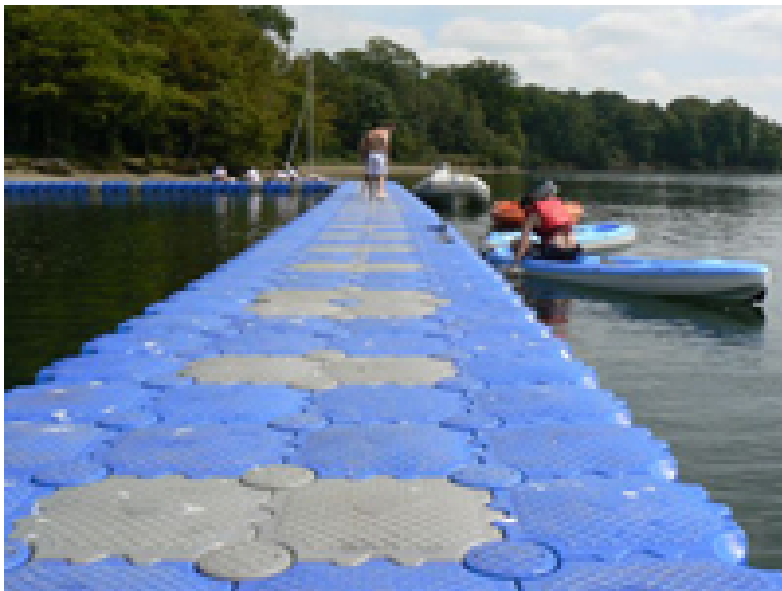
*All technical suppliers shall make the necessary arrangements for their equipment to be adequately protected in case of bad weather.*





## DETAILS FOR SHOWS ON, OR IN FRONT, OF WATER

- We need 2 barges (or landing stages) with anchors and floor, they have to be stable enough for fireworks setting :
  - 1 barge 6 m x 6 m located 70 meters behind the front of the stage (depending on the site)  
The proper location will be decided according to the final ground plan.
  - 1 barge 14 m x 6 m located 14 meters behind the front of the stage.
- This 2 barges must be install and ready for 9:00 o'clock the day of the show.
- We need also 2 boats with motor (4m x 1,30 m minimum) from 9:00 o'clock
- We also ask 2 booms light at 7m high (such as ST25), delivered on the 14m x 6m barge. This 2 booms light replace instead of the forkilft asked page 9.



## **NOTE FOR THE TECHNICAL STAFF**

**It's very important for you to respect the following points:**

- No material behind the stage (i.e such as flight cases) for safety reason
- The stage is part of the safety area. For safety reasons, smoking is forbidden.
- You shall make the necessary arrangements for your equipment to be adequately protected in case of bad weather.
- All the wires (sound and light) have to be protected from fire as much as possible.
- Just after the show, acces to the stage is not allowed without our permission. We need 20min to take off the fireworks.